



GRITTGEAR®

TOUGH GRITT | COMFORT FITT™



SAFETY BOOTS



www.grittgear.co.za



CLASSIFICATION

S1:

- STEEL TOE CAP WITH IMPACT PROTECTION OF 200 JOULES
- SAFETY BASIC
- CLOSED SEAT REGION
- ANTISTATIC
- ENERGY ABSORPTION OF SEAT REGION
- FUEL OIL RESISTANT OUTSOLES

S1P:

- STEEL TOE CAP WITH IMPACT PROTECTION OF 200 JOULES
- STEEL MIDSOLE
- SAFETY BASIC
- CLOSED SEAT REGION
- ANTISTATIC
- ENERGY ABSORPTION OF SEAT REGION
- FUEL OIL RESISTANT OUTSOLES
- WATER RESISTANT OF UPPER

S3:

- STEEL TOE CAP WITH IMPACT PROTECTION OF 200 JOULES
- STEEL MIDSOLE
- SAFETY BASIC
- CLOSED SEAT REGION
- ANTISTATIC
- ENERGY ABSORPTION OF SEAT REGION
- FUEL OIL RESISTANT OUTSOLES
- WATER RESISTANT OF UPPER
- PENETRATION RESISTANT OF OUTSOLE
- CLEATED OUTSOLE

DOLOMITE

SPLIT COW LEATHER

SPECIFICATIONS:

Lining: Air Mesh

Sole: Dual density Polyurethane with aesthetically designed dual colour outsole; Shock absorber; Extra grip Oil resistant; Antistatic and Slip resistant

Eyelets: Metal loop eyelets

Insole: Infused foam; Antistatic Removeable sock

Upper: Steel toe cap with impact Protection of 200 joules; Reflector tape

COLOURS: BLACK

SIZES: 3-13



MAGNESITE

SPLIT COW LEATHER

SPECIFICATIONS:

Lining: Air Mesh

Sole: Dual density Polyurethane with aesthetically designed dual colour outsole;
Shock absorber; Extra grip
Oil resistant; Antistatic and Slip resistant

Eyelets: Metal loop eyelets

Insole: Infused foam; Antistatic
Removeable sock

Upper: Steel toe cap with impact Protection of 200 joules

COLOURS: BLACK

SIZES: 3-13



MANGANO

SMOOTH COW LEATHER

SPECIFICATIONS:

Lining: Air Mesh

Sole: Dual density Polyurethane with aesthetically designed dual colour outsole;
Shock absorber; Extra grip
Oil resistant; Antistatic and Slip resistant

Insole: Infused foam; Antistatic
Removeable sock

Upper: Steel toe cap with impact Protection of 200 joules

COLOURS: BLACK

CHOCOLATE

SIZES: 3-13



MANGANO

SMOOTH COW LEATHER

SPECIFICATIONS:

Lining: Air Mesh

Sole: Dual density Polyurethane with aesthetically designed dual colour outsole;
Shock absorber; Extra grip
Oil resistant; Antistatic and Slip resistant

Insole: Infused foam; Antistatic
Removeable sock

Upper: Steel toe cap with impact Protection of 200 joules

COLOURS: BLACK

CHOCOLATE

SIZES: 3-13





QUARTZ

SMOOTH COW LEATHER

SPECIFICATIONS:

Lining: Air Mesh; Comfort Collar

Sole: Dual density Polyurethane with aesthetically designed dual colour outsole; Shock absorber; Extra grip Oil resistant; Antistatic; Steel Midsole and Slip resistant

Eyelets: Metal hole + Hooks

Insole: Infused foam; Antistatic Removeable sock

Upper: Steel toe cap with impact Protection of 200 joules

COLOURS: BLACK

CHOCOLATE

SIZES: 3-13



QUARTZ

SMOOTH COW LEATHER

SPECIFICATIONS:

Lining: Air Mesh; Comfort Collar

Sole: Dual density Polyurethane with aesthetically designed dual colour outsole; Shock absorber; Extra grip Oil resistant; Antistatic; Steel Midsole and Slip resistant

Eyelets: Metal hole + Hooks

Insole: Infused foam; Antistatic Removeable sock

Upper: Steel toe cap with impact Protection of 200 joules

COLOURS: BLACK

CHOCOLATE

SIZES: 3-13



SLATE

CRAZY HORSE LEATHER

SPECIFICATIONS:

- Lining: Air Mesh; Comfort Collar
- Sole: Dual density Polyurethane;
Rubber outer sole;
Kevlar mid sole; Steel toe cap with impact Protection of 200 joules; Up to 300 degrees heat resistant; Slip resistant; Oil resistant and Bull nose
- Insole: Antstatic **Supreme comfort** infused foam sock
- Upper: Water resistant; Heat resistant
- COLOURS: BLACK
CHOCOLATE
- SIZES: 5-13



SLATE

CRAZY HORSE LEATHER

SPECIFICATIONS:

Lining: Air Mesh; Comfort Collar

Sole: Dual density Polyurethane; Rubber outer sole; **Kevlar mid sole**; Steel toe cap with impact Protection of 200 joules; Up to 300 degrees heat resistant; Slip resistant; Oil resistant and Bull nose

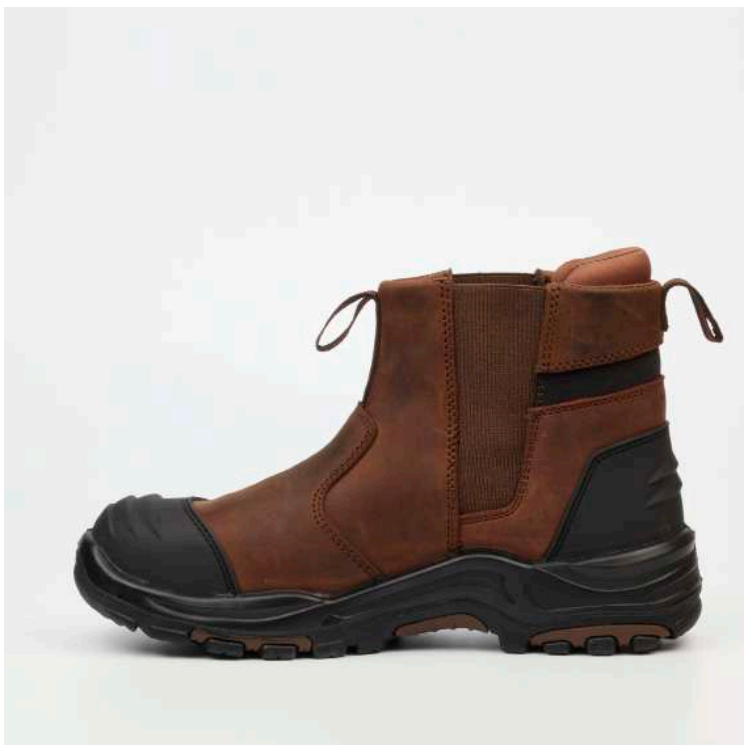
Insole: Antstatic **Supreme comfort** infused foam sock

Upper: Water resistant; Heat resistant

COLOURS: BLACK

CHOCOLATE

SIZES: 5-13





SLATE

LEATHER

SPECIFICATIONS:

- Lining: Air Mesh; Comfort Collar
- Sole: Dual density Polyurethane; Rubber outer sole; **Kevlar mid sole**; Steel toe cap with impact Protection of 200 joules; Up to 300 degrees heat resistant; Slip resistant; Oil resistant and Bull nose
- Insole: Antstatic **Supreme comfort** infused foam sock
- Upper: Heat resistant
- COLOURS: BLACK
- SIZES: 5-13



FLINT

CRAZY HORSE LEATHER

SPECIFICATIONS:

- Lining: Air Mesh; Comfort Collar
- Sole: Dual density Polyurethane; Rubber outer sole; **Kevlar mid sole**; Steel toe cap with impact Protection of 200 joules; Up to 300 degrees heat resistant; Slip resistant; Oil resistant and Bull nose
- Eyelets: Metal hole + Hooks
- Insole: Antstatic **Supreme comfort** infused foam sock
- Upper: Water resistant; Includes extra lace (Black + Cyan GRITTEAR FLECO)
- COLOURS: BLACK
CHOCOLATE
- SIZES: 5-13





FLINT

CRAZY HORSE LEATHER

SPECIFICATIONS:

Lining: Air Mesh; Comfort Collar

Sole: Dual density Polyurethane; Rubber outer sole; **Kevlar mid sole**; Steel toe cap with impact Protection of 200 joules; Up to 300 degrees heat resistant; Slip resistant; Oil resistant and Bull nose

Eyelets: Metal hole + Hooks

Insole: Antstatic **Supreme comfort** infused foam sock

Upper: Water resistant; Includes extra lace (Black + Cyan GRITTEAR FLEC)

COLOURS: BLACK

CHOCOLATE

SIZES: 5-13





FLINT

LEATHER

SPECIFICATIONS:

Lining: Air Mesh; Comfort Collar

Sole: Dual density Polyurethane; Rubber outer sole; **Kevlar mid sole**; Steel toe cap with impact Protection of 200 joules; Up to 300 degrees heat resistant; Slip resistant; Oil resistant and Bull nose

Eyelets: Metal hole + Hooks

Insole: Antstatic **Supreme comfort** infused foam sock

Upper: Includes extra lace (Black +Cyan GRITTEGEAR FLEC)

COLOURS: BLACK

SIZES: 5-13



MEDICATE

EVA RUBBER

SPECIFICATIONS:

Lining: EVA

Sole: EVA + Rubber; Water proof;
Anti Slip: Oil Resistant

Insole: Removable Anti Bacterial Sock

COLOURS: BLACK

SIZES: DUAL SIZE



SNIPER

CANVAS

SPECIFICATIONS:

Lining:	Canvas
Sole:	Dual density construction for durability and comfort; Shock absorber; Oil resistant; Antistatic and Slip resistant
Insole:	Infused foam; Antistatic Removeable sock

COLOURS: BLACK

SIZES: 4 - 12



GARNET 1

SMOOTH LEATHER

SPECIFICATIONS:

Lining: Air Mesh

Insole: Infused foam

COLOURS: BLACK

SIZES: 5 - 12



GARNET 2

SMOOTH LEATHER

SPECIFICATIONS:

Lining: Air Mesh

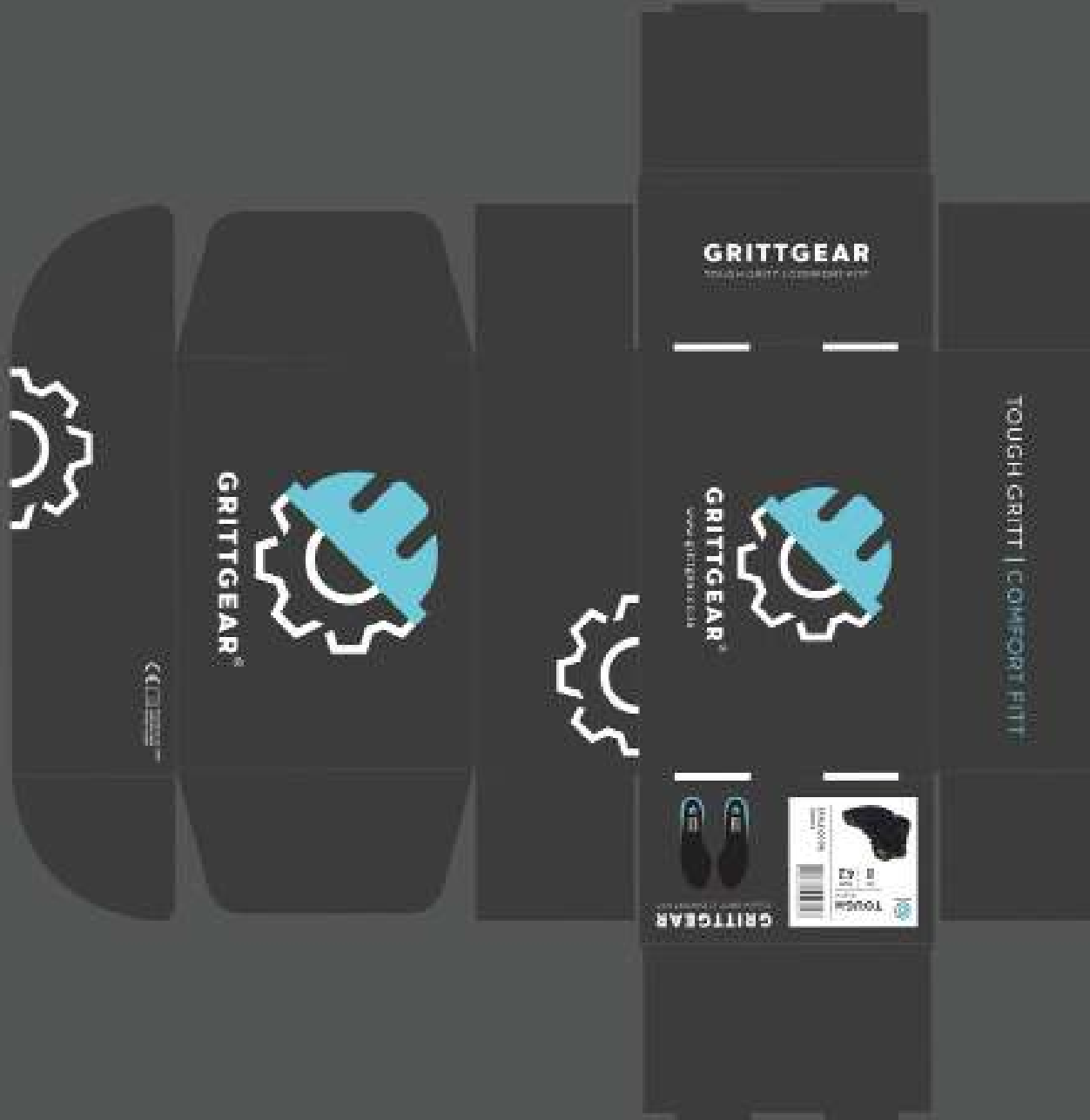
Insole: Infused foam

COLOURS: BLACK

SIZES: 5 - 12



PACKAGING



SWINGTAG



GRITTEGEAR®


TOUGH GRIT | COMFORT FIT

SAFETY BOOT
Model 8000

www.grittgear.com
844-999-0000
800-833-3333

CE EN ISO

www.grittgear.co.uk

TOUGH GRIT			SAFETY BOOT
EXACT ASCENDING SOLE			DOUBLE DENSITY POLYURETHANE SOLE
1.8" BRUSHED TOOTH LUG			500 PSI RUBBER HEEL
PROFESSIONAL HEEL			WELDED HEEL
100% GENUINE FULL GRAIN			100% GRAIN FULL GRAIN
IMPACT RESISTANT HEEL			WATER RESISTANT LEATHER
ANTI-SLIP TREAD			STEEL TOE CAP

SPECIFICATIONS

GRITTEGEAR®



Understanding the classification of your safety footwear will ensure that you choose a shoe or boot that offers you the ideal level of protection.

- S1**
 - EN 13803:2015
 - 100% Genuine Full Grain
 - 100% Grain Full Grain
 - 100% Grain Full Grain
- S1P**
 - EN 13803:2015
 - 100% Genuine Full Grain
 - 100% Grain Full Grain
- S3**
 - EN 13803:2015
 - 100% Genuine Full Grain
 - 100% Grain Full Grain

SI SAFETY SHOE

GRITTEGEAR®



GRITTEGEAR's PU and engineered infused foam insole are breathable, moisture-wicking, and fast-drying foam insoles, enhanced full surface support. It incorporates various other features like arch support, heel support, and an anti-static technology.

100% PU and infused foam insole, ensuring all day comfort.

INFUSED FOAM ENGINEERED FOR COMFORT

GRITTEGEAR®




Reducing the slip modulus of your safety shoes and boots is crucial in avoiding workplace accidents. The tread pattern, random features, low protrusions, irregular protrusions, and various settings to achieve a slip resistant tread. These shoes are tested at 25A, 25B, & 25C.

25A-rated shoes undergo testing on ceramic tiles covered with diluted soap solution, while 25B-rated shoes are tested on smooth steel with glycerol.

25C-rated shoes successfully pass both the 25A and 25B slip resistance tests.

25C CERTIFIED SLIP RESISTANT

GRITTEGEAR®



The infused foam insole by GRITTEGEAR incorporates a steel toe cap designed to shield your feet from falling objects during work, offering impact resistance up to 200 J EN.

Steel, known for its inherent strength, is utilized as the best material to protect your feet from falling objects. The steel toe cap also provides additional space around the foot, increasing the comfort of your safety footwear.

200 JOULE TOE CAP

GRITTEGEAR®

DANGEE | CARKEN®

FIRST IN SAFETY FOOTWEAR™

www.grittgear.co.za